



DO BUSINESS BETTER

NURIT[®] 8320

Secure Payment Terminal



The **Compact All-in-One**
for **Easy, Secure Transactions**



**Visa PED
&
EMV**

NURIT[®] 8320

Secure Payment Terminal



The Ideal All-in-One Solution

The **NURIT 8320** is a secure and reliable landline terminal, which is easy-to-handle. As a compact all-in-one solution, it is specifically designed to respond to the needs of **small and medium-sized businesses**.

This **high performance, multifunction POS** incorporates a **secure internal PIN pad, high-speed modem, and quiet, fast thermal printer**, as well as **magnetic card swipe and Smart Card reader**.

Powerful processing capabilities support a **multi-application environment**, enabling the use of a variety of applications including EMV and magnetic stripe credit and debit; loyalty, gift, and proprietary cards; checks; and prepaid phone cards.

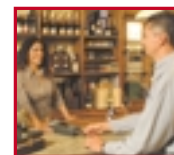
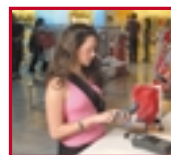
With optional **Ethernet or RS-485 LAN and GSM/GPRS cellular modem**, the **NURIT 8320** provides communication options for any location.

Cost-Effective and Convenient

This complete application flexibility assures that even the smallest businesses can offer the **highest level of customer convenience** – with the **purchase of just one device**.

Low cost of ownership is further assured by **rapid transaction processing and fast downloading** of software and parameters - as well as **full application compatibility** across all **NURIT** devices. Any application developed for a **NURIT** device can easily and smoothly run on the **NURIT 8320**.

In addition, the **NURIT 8320** enables an **economical migration to EMV** in regions that are making the transition to Chip and PIN.



Security Standards

Designed to meet demanding **Visa PED and MasterCard** requirements, this sophisticated terminal offers an **exceptionally high level of security**, enabling **secure transactions** as well as **secure software downloads**.

The unique **multi-application NURIT operating System** prevents independent applications from accessing each other's data. Optionally **tamper-resistant, tamper-evident, and tamper-responsive**, the **NURIT 8320** protects users from fraudulent intrusion and corruption. The convenient **privacy shield** assures customers of **confidentiality during PIN entry**.

Multi-Market Flexibility

The **NURIT 8320** is **easily customized** to meet the needs of merchants everywhere - whatever the type or scale of business. **Flexible branding options** include: **color** of terminal, company **logo**, **language** support/fonts, and **keyboard layout and functionality**. Customers can **create a package of features** to suit their specific requirements.

Security Options

The **NURIT 8320** can be purchased with the precise level of **security** to match every type of business and terminal usage:

- As an **all-in-one unit with secure Internal PIN Pad and privacy shield**, it is ideal for businesses with occasional PIN transactions; the optional coiled combination cable enables easy hand-over to customers.
- As **two separate units**, a **NURIT 8320 terminal plus a secure NURIT 292 external PIN Pad**, it is ideal for businesses with frequent PIN transactions.

A variety of other security features can be selected to meet each customer's unique needs.

- **Modems** can be ordered with speeds up to 56 kbps.
- **Customized applications** can be designed for specific industries/businesses.

End-to-End Compatibility

The **NURIT 8320** was designed for **across-the-board compatibility**.

The sophisticated multi-application **NURIT Operating System** enables **all applications** – including a wide range of value added applications - to run on **all NURIT terminals**.

The terminal can be **easily integrated** with an assortment of **external devices**, including:

- External PIN Pad
- Check Imager
- Cash Register
- Signature Capture Pad
- Barcode Reader

Simplified Operation & Management

Lipman's state-of-the-art **NURIT Operating System (NOS 7)** provides forward & backward compatibility among all **NURIT** products, and enables total flexibility in the development of customized applications.

The **NURIT Control Center** makes it easy to support your **NURIT 8320** terminal network. The sophisticated yet intuitive management system supports a variety of back-office functions for dynamic markets. It enables control of remote terminals, and facilitates management of the wide range of market-specific applications that can run on **NURIT 8320** terminals. Scalable and easily customized, the **Control Center** offers various downloading capabilities. The **Control Center** simplifies the development of terminal applications with customized personalization parameters.

Features

- Meets MasterCard & Visa PED security requirements
- Internal PIN Pad with DES and triple DES
- Compact, ergonomically designed
- Fast, quiet, built-in thermal printer
- Large backlit graphical display
- Optional internal battery pack for up to five hours operating time
- Built-in modem
- Built-in Smart Card reader
- Fast 32-bit ARM 7 processor
- 4 SAM modules (optional)
- Multi-language font support
- Application software compatibility
- Various memory options



Multi-App



Security



Wireless



Perfect for

Boutiques



Department Stores



Supermarkets



Discount Outlets



Cinemas & Theaters



Restaurants



Tourist Centers



Prepaid Services Vendors

Specifications

User interface

- 128 x 64 pixel graphical backlit display
- 20-key ergonomic keypad
- Menu-driven system
- Multi-language font support

Printer

- Quiet thermal graphic printer
- Up to 15 lines/second
- Automatic paper feeder
- 57 mm/2.25" wide paper
- 8 dots/mm resolution

Magnetic stripe card reader

- Vertical swipe, bi-directional
- Tracks 1 & 2 or 2 & 3, 3-track optional

Communication

- 300 / 1200 / 2400 / up to 14,400 bps landline modem
 - optional 33 kbps or 56 kbps modem
- Fast Connect
- Synchronous or asynchronous
- HDLC
- TCP/IP
- Optional Ethernet or RS-485 LAN
- Optional GSM/GPRS radio modem with internal antenna

Processor and memory

- 32-bit ARM 7 processor
- 2 to 4MB Flash memory for software
- 512KB to 2MB battery backed-up RAM for user data, including RAM disk, with one year minimum data retention

Optional features

- EMV Level 1 Smart Card reader
- Up to four ISO 7816 contact SAMs
- Secure Internal PIN Pad with Triple DES

Interfaces

- RS-232
- External PIN Pad
- Telephone and line
- Optional LAN

Software

- Powerful and proven NURIT Operating System (NOS)
- Easy to use SDK and debugging tools
- Download of application, parameters and/or NOS over phone or RS-232
- EMV Level 2 Kernel Library available
- Same applications run on all Lipman terminals

Security options

- Tamper-resistant
- Tamper-evident
- Tamper-responsive
- Secure download
- Visa PED

Approvals

- EMV Levels 1 and 2
- Visa PED
- FCC parts 15 and 68
- CE
- TBR 21
- UL/TUV power supply

Dimensions

- 82 mm/3.23" (H) x 108 mm/4.25" (W) x 230 mm/9.06" (D)

Weight

- 765 g/1.66 lb, including battery pack and paper roll

Lipman, NURIT, NURIT 8320 and NOS are trademarks of Lipman Electronic Engineering Ltd., and may be registered in certain jurisdictions. Other company and brand, product and service names are trademarks or registered trademarks of their respective holder. Data and specifications are subject to change without notice.



LIPMAN International Headquarters

11 Ha'amal Street, Park Afek Rosh-Ha'ayin 48092, ISRAEL Tel: +972 3 902 9730 Fax: +972 3 902 9731 e-mail: mail@lipman.co.il website: www.lipman.biz

Lipman USA

Tel: +1 516 484 9898
e-mail: info@lipmanusa.com

Fax: +1 516 484 9057
www.lipmanusa.com

Lipman Turkey

Tel: +90 212 276 3388
e-mail: mail@lipman.com.tr

Fax: +90 212 276 3898
www.lipman.com.tr

Lipman Spain

Tel: +34 91 598 2140
e-mail: nuritsys@lipman.es

Fax: +34 91 597 0097
www.lipman.es

Lipman China

Tel: +86 10 839 13700/01/02
e-mail: lipman@public3.bta.net.cn

Fax: +86 10 839 13703
www.lipman.com.cn

Lipman CIS

Tel: +7 095 204 1082
e-mail: lipman@gutatelecom.ru

Fax: +7 095 204 1080
www.lipman.ru

Lipman Italy

Tel: +39 339 402 4306
e-mail: mail@lipman.co.il

www.lipman.biz

Lipman Far East

Tel: +972 3 902 9750
e-mail: mail@lipman.co.il

Fax: +972 3 902 7591
www.lipmanfareast.com

Lipman Latin America

Tel: +1 305 234 4110
email: obello@lipmanusa.com

Fax: +1 305 971 2638
www.lipmanusa.com