



► **Certifications**

- PCI+ Certified
- ZKA Approved
- EPS Certified
- PTS Approved
- RSA Secured
- Interac Certified
- PCI-PED Certified
- EMV Approved

► **Applications**

- Delivery services
- Taxis • Outdoor markets
- Drive-in restaurants
- Pay-at-the-table restaurants
- Golf courses • Kiosks
- Casinos • Stadiums
- Drive-thru pharmacies
- Car rental return

The Wireless Solution for Businesses that Reject Boundaries

If your business could be more profitable by accepting payment anywhere, Blade is the revolutionary portable you should put to work.

Blade is a fully functional wireless terminal designed for businesses that need to operate on the go, in temporary locations, or at remote points of service. It features an Intel XScale® 32-bit processor for maximum transaction speed. It reads all types of cards, including magnetic stripe, chip and contactless payment. And its sophisticated battery can handle over 200 transactions on a single charge.

Engineered for flexibility, Blade can be customized with a variety of value-added software solutions from gift and prepaid cards to inventory control and mapping services. But its modular design means you only pay for the options you need.

Count on Blade to help you open new markets, offer more services, increase efficiency and improve profitability. It's the sure, secure solution for businesses that reject boundaries.



Ergonomic palm-size design



Brilliant LED backlit color screen



Signature capture capabilities

UNSURPASSED FUNCTIONALITY. USER-FRIENDLY FEATURES.



Patent Pending

Intel XScale® 32-bit processor ► High-speed transactions

Lightweight construction ► Fits in pocket

Modular design ► Pay only for the functions you need

Illuminated key pad ► Easy to use in all conditions

Long-life battery ► All day use

Multiple charging options ► Flexibility and convenience

SET YOUR BUSINESS FREE WITH THE POWER OF BLADE

TECHNICAL SPECIFICATIONS:

PROCESSOR

- Intel XScale 200 MHz, 32-bit processor

KEYPAD

- **Elastomeric:** 14 keys, 10 numeric; water splash-resistant, hard keycaps, illuminated

DISPLAY

- **LCD:** 240 x 320, 1/4 VGA color, resistive touchscreen; 64K colors, LED backlight
- **Screen protector**

CARD READER

- **Magnetic stripe:** Tracks 1, 2 & 3 standard; illuminated
- **Chip card:** ISO 7816, 2 SAM sockets, illuminated entry
- **Contactless payment:** Optional, ISO 14443 A & B

COMMUNICATIONS

- **GSM/GPRS, WiFi 802.11 G**
- **Peripheral port:** Client USB; V.90 via optional docking station

PRINTER

- **Fanfold (optional):** Top of the form detection, integrated, swappable battery
- **Paper:** 52mm x 70mm sheet size; 100 sheets per pack

MEMORY

- **SRAM:** 512KB (standard); 1MB (optional)
- **Flash:** 8MB (standard); 16 MB, 32 MB (optional)
- **SDRAM:** 16MB (standard); 32MB (optional)

POWER

- **Battery:** Lithium-Ion, 3.6V, 1150 mA hour capacity; Coin, 3V, 5-year
- **Charging:** USB port, wall adapter, docking station (optional)

PIN ENCRYPTION

- **DES:** PIN-ANSI X9.8, MAC-ANSI X9.9, ANSI X9.24 Part 1
- **Triple DES:** ANSI X9.52
- **Key management:** 12 master/session keys and DUKPT

FOOTPRINT

- 2.73 in x 4.99 in x 1.15 in/
6.93 cm x 12.67 cm x 2.92 cm

ENVIRONMENT

- **Temperature:** 0-45°C/32-115°F
- **Humidity:** Max 85%, non-condensing
- **ESD:** 12,000 volts

RELIABILITY

- 100,000 hours (MTBF calculated)

All the Convenience of a Countertop Terminal—without the Cord

- ▶ Reads all types of magnetic stripe, chip, and contactless payment cards, providing true mobility
- ▶ Utilizes familiar Hypercom software so there's no learning curve
- ▶ Captures signatures to verify transactions and save you charge-back fees
- ▶ Allows secure PIN entry with ADA-compliant backlit, color-coded keys

Palm-Size Styling, Super-Size Performance

- ▶ State-of-the-art backlit active matrix screen provides a brilliant 64K color display
- ▶ Engineered with the memory and functionality to accommodate multiple custom software applications
- ▶ Powered by batteries that last up to twelve hours between charges and process up to 200 transactions on a single charge

So Secure, It Exceeds Wireless Standards

- ▶ Meets global security and communications standards including EMV and PCI-PED
- ▶ Provides Triple DES for secure encryption and protection of cardholder information
- ▶ Tamper-proof architecture protects internal systems from invasion

The Flexibility You Need...When and Where You Need It

- ▶ Modular design lets you add or change options and applications
- ▶ Provides an extra check-out terminal during high-traffic times
- ▶ Expands your points of service so you can grow your business



© 2007 Hypercom Corporation, all rights reserved. Hypercom is a registered trademark of Hypercom Corporation. The Hypercom logo is a trademark of Hypercom Corporation. All other products or services mentioned in this document are trademarks, service marks, registered trademarks or registered service marks of their respective owners. Product Specifications subject to change without notice. 940510-001, Rev C February 2007

OPTIONAL ACCESSORIES



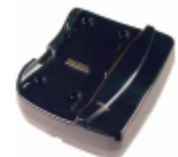
FANFOLD PRINTER

Small form factor provides full printer functionality with minimal weight.



FANFOLD PAPER

Slim portable size contains 100 sheets per pack.



DOCKING STATION

Offers QuickCharge™ capability to power up batteries.



WALL ADAPTER

Wall-mount battery charger saves valuable counter space.



WORLD HEADQUARTERS:

Hypercom Corporation
2851 West Kathleen Road
Phoenix, Arizona 85053 USA
Tel: +1.602.504.5000
Fax: +1.602.504.4655

www.hypercom.com